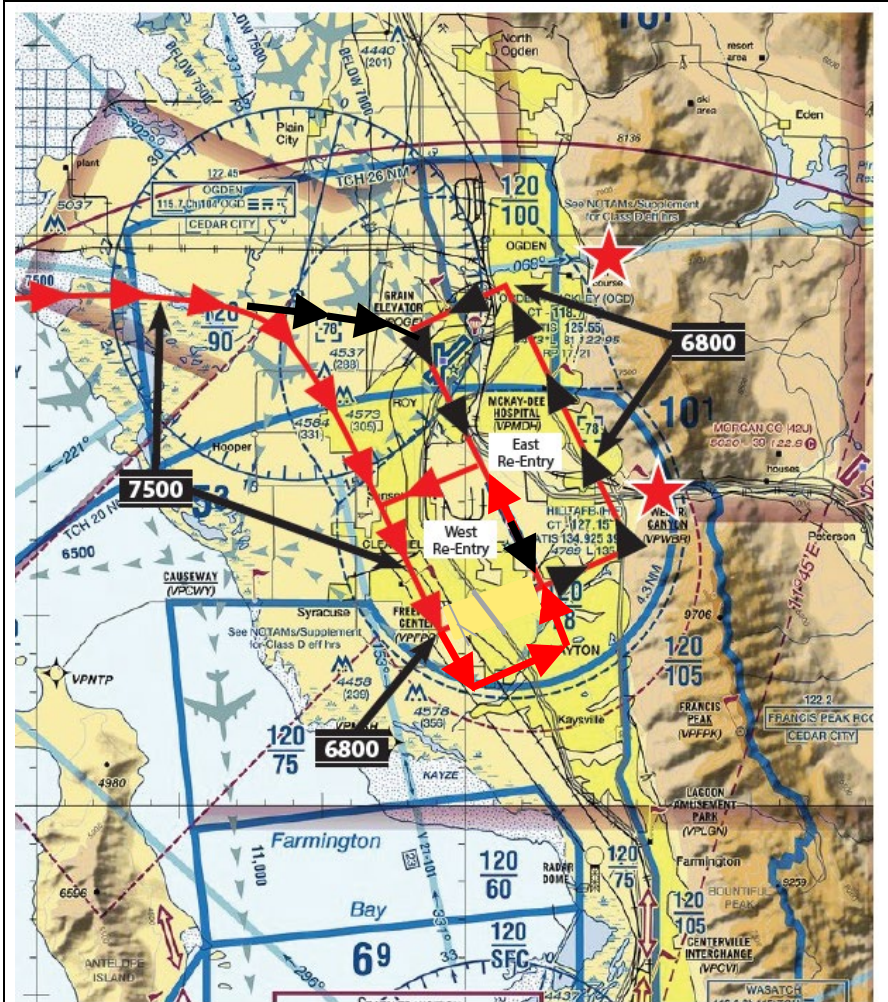


# MID AIR COLLISION AVOIDANCE (MACA)

## LOCAL AIRPORTS

Airport Name	TOWER	APP/DEP	GRND	ATIS
Bolinder Field (KTVY)	CTAF 123.0	SLC 126.25/135.5	N/A	119.725
Brigham City (KBMC)	CTAF 123.05	SLC 121.1	N/A	135.075
Heber Valley (KHCR)	CTAF 122.8	SLC 119.95	N/A	AWOS-3 124.825
Hill AFB (KHIF)	127.15	SLC 121.1	121.6	134.925
Logan-Cache (KLGU)	CTAF 122.8	SLC 127.7	N/A	135.275
NEPHI Muni (U14)	CTAF 123.075	127.825	N/A	118.275
Ogden (KOGD)	118.7	SLC 121.1	121.7	125.55
Provo (KPVU)	125.3	SLC 118.85	119.4	135.175
Salt Lake City Intl (KSLC)	RWY 14-32 / 17-35 <b>(118.3)</b> RWY 16L-34R <b>(119.05)</b> RWY 16R-34R <b>(132.65)</b>	APP: <b>126.25</b> Dep: <b>125.7</b>  <b>*Ref sectional or A/FD for specific APP/DEP freqs for SLC area</b>	RWY 14-32 / 17-35 <b>(121.9)</b> RWY 16L- 34R/16R-34L <b>(123.775)</b>	D-ATIS 124.75 ASOS 125.625
Skypark - Bountiful (KBTF)	CTAF 122.8	N/A	N/A	SLC 125.625
South Valley (U42)	CTAF 122.7	SLC APP: 120.9 DEP: 128.6	N/A	AWOS-3 134.425
Spanish Fork (KSPK)	CTAF 122.9	SLC 118.85	N/A	AWOS-3 119.275
Wendover (KENV)	CTAF 122.8	Clover: 134.1 (M-Th: 0700- 2400 Fri: 0700-1800) SLC: 128.55	N/A	AWOS-3 120.55

# MID AIR COLLISION AVOIDANCE (MACA)



★ = POTENTIAL CONFLICT AREAS

## HILL AFB TRAFFIC PATTERNS

Hill's Airspace Surface - 7,800'  
Ref Sectional Chart for details

For Reference only